

GILMORE ESTATES

Property Sales & Lettings



Mount Pleasant , West Mickley, NE43 7LP

Nestled in the charming village of Mount Pleasant, West Mickley, this delightful two-bedroom terraced cottage offers a perfect blend of comfort and picturesque surroundings. Spanning an impressive 980 square feet, the property boasts a spacious lounge that features a cosy wood-burning stove, ideal for those chilly evenings when you wish to unwind in front of a warm fire.

The cottage comprises two generously sized double bedrooms, providing ample space for relaxation and rest. The stunning views from the property enhance the tranquil atmosphere, making it an ideal retreat for those seeking a peaceful village lifestyle.

Additionally, the property is available part furnished, allowing you the flexibility to personalise your new home to your taste. A gardener is included, ensuring that the outdoor space remains well-maintained, allowing you to enjoy the beauty of your surroundings without the hassle of upkeep.

This charming cottage is perfect for anyone looking to embrace village life while still enjoying modern comforts. With its inviting features and idyllic location, this property is not to be missed.

£895

Mount Pleasant

, West Mickley, NE43 7LP



- TERRACED HOUSE
- TWO LARGE BEDROOMS
- PART FURISHED
- SPACIOUS LOUNGE & DINING KITCHEN
- VILLAGE LOCATION
- GARDENER INCLUDED
- WOOD BURNING STOVE
- STUNNING VIEWS
- NO PETS

Entrance Hallway

Lounge

Dining Kitchen

First Floor Landing

Bedroom One

Bedroom Two

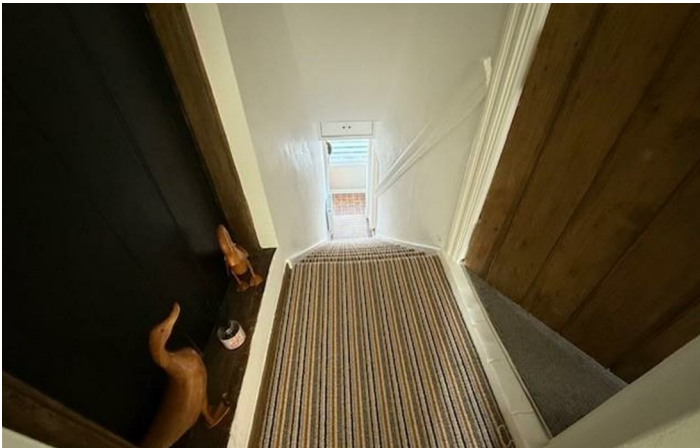
Bathroom

Outdoor WC

Garden

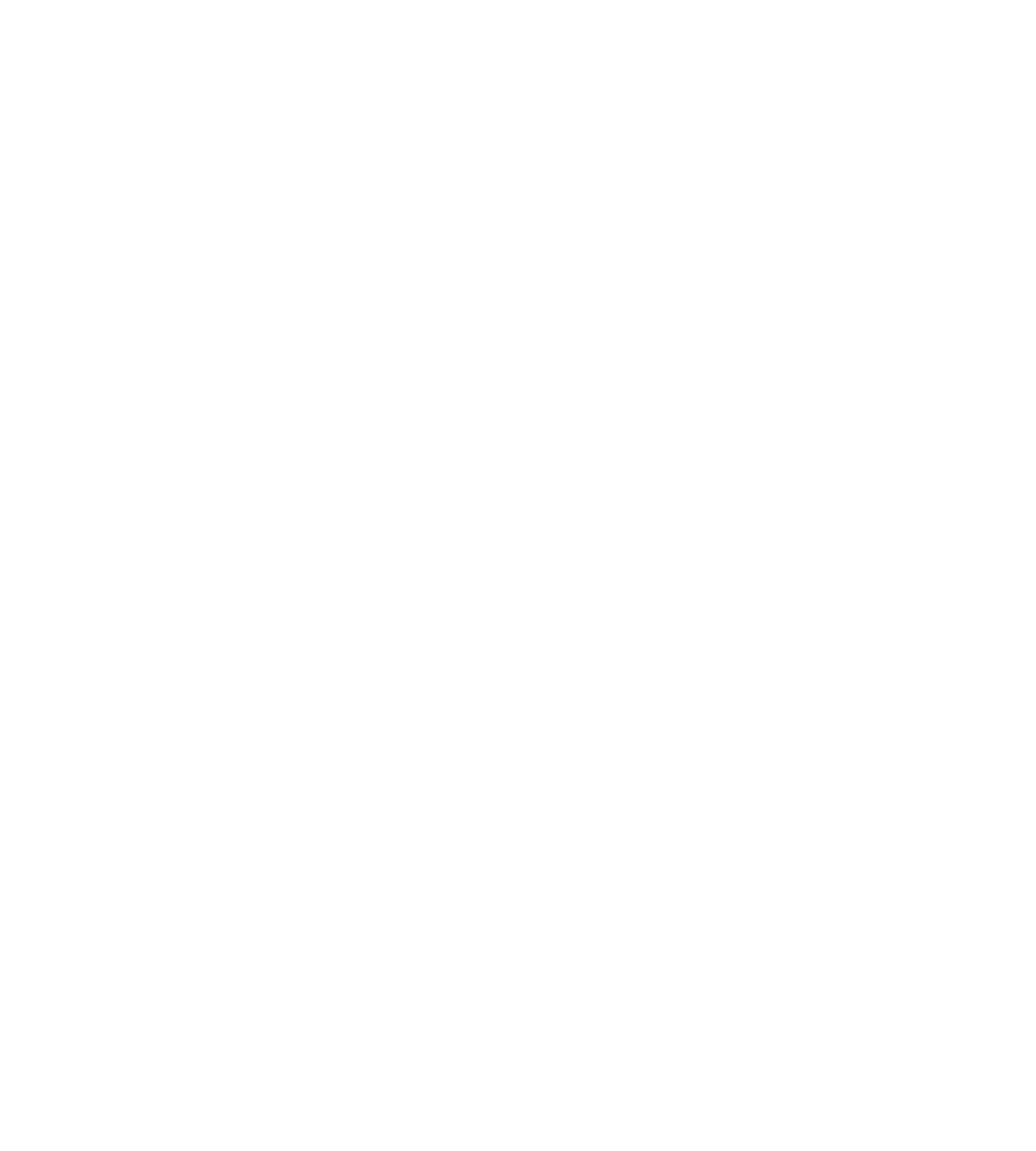


Directions





Floor Plan



These particulars, whilst believed to be accurate are set out as a general outline only for guidance and do not constitute any part of an offer or contract. Intending purchasers should not rely on them as statements of representation of fact, but must satisfy themselves by inspection or otherwise as to their accuracy. No person in this firms employment has the authority to make or give any representation or warranty in respect of the property.

